

LAKE TEXOMA

PUBLIC HUNTING AREA



LEGEND

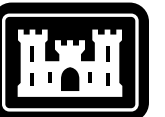
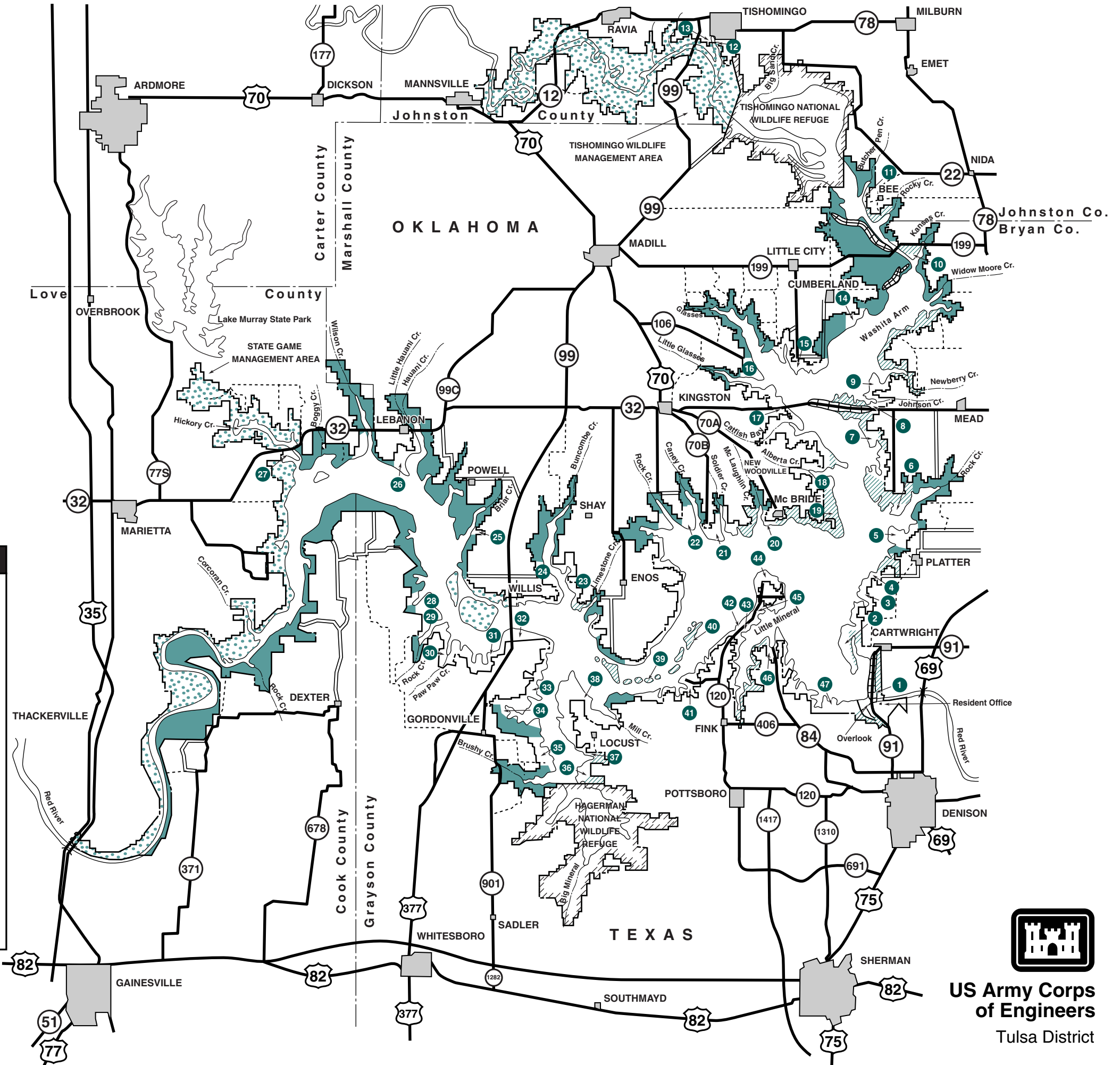
- Paved Road
- Improved Road
- County Road
- Project Boundary
- Corps Areas Open For Hunting
- State Areas Open For Hunting
- See Restrictions

PUBLIC USE AREAS

- | | | |
|-------------------------|-------------------------|--------------------------|
| 1 Dam Site Area | 17 Texoma State Park | 33 Cedar Mills |
| 2 Burns Run | 18 Alberta Creek | 34 Walnut Creek |
| 3 Sunset Camp | 19 Washita Point | 35 Big Mineral |
| 4 Willafa Woods | 20 Roads End | 36 Flowing Wells |
| 5 Platter Flats | 21 Soldier Creek | 37 Paradise Cove |
| 6 Lakeside | 22 Caney Creek | 38 Mill Creek |
| 7 Willow Springs | 23 Arrowhead Point | 39 Treasure Island |
| 8 Johnson Creek | 24 Buncombe Creek | 40 North Island |
| 9 Newberry Creek | 25 Briar Creek | 41 Highport Resort |
| 10 Kansas Creek | 26 Lebanon Resort | 42 Island View |
| 11 Butcher Pen | 27 Hickory Creek | 43 Preston Fishing Camp |
| 12 Tishomingo City Park | 28 Rock Creek | 44 Preston Point |
| 13 Pennington Creek | 29 Paw Paw Point | 45 Preston Bend Resort |
| 14 Cumberland Cove | 30 Paw Paw Creek Resort | 46 Grandpappy Point |
| 15 Bridgview | 31 Cedar Bayou | 47 Eisenhower State Park |
| 16 Little Glasses | 32 Juniper Point | |



RESERVOIR DATA
 Top of conservation pool El. 617.0
 580 shoreline miles at El. 617.0
 Total project land & water acreage 193326



US Army Corps of Engineers
 Tulsa District