

FORT GIBSON LAKE

LOCATION OF DAM—Fort Gibson Dam is in the Arkansas River Basin on the Grand (Neosho) River, at mile 7.7, Lat. 35°52'11", Long. 95°13'47" in Sec. 18, T16N, R20E in Cherokee County about 5 miles north of the town of Fort Gibson and about 12 miles northeast of Muskogee.

CONSTRUCTION STATUS—Constructed by Corps of Engineers—Construction was started in 1942, suspended during World War II and completed on September 2, 1953. Four 11,250 kilowatt hydroelectric generating units were placed on line September 1953. Cost of the project was \$43,347,622.

PURPOSE/AUTHORIZATION—Flood control and hydroelectric power. Authorized by the Flood Control Act approved August 18, 1941. Incorporated in the Arkansas River Multiple-purpose Plan by River and Harbor Act of July 24, 1946. Project Document HD 107, 76th Congress, First Session.

STRUCTURE DATA—The dam consists of two concrete sections and two earthfill sections which make up a total length of 2,990 feet. The structure rises 110 feet above the streambed. The spillway is controlled by thirty 40 × 35 foot tainter gates, has a total length of 1,490 feet and a capacity of 986,000 cfs at maximum pool elevation.

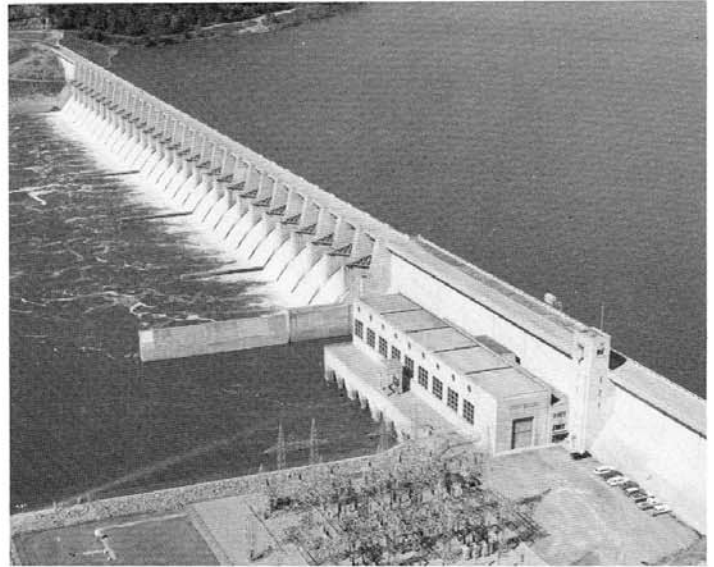
SHORELINE LENGTH—225 miles

DRAINAGE AREA—12,492 square miles

DEPTH—Mean 18.35 ft., Max. 71 ft. Based on normal pool elevation.

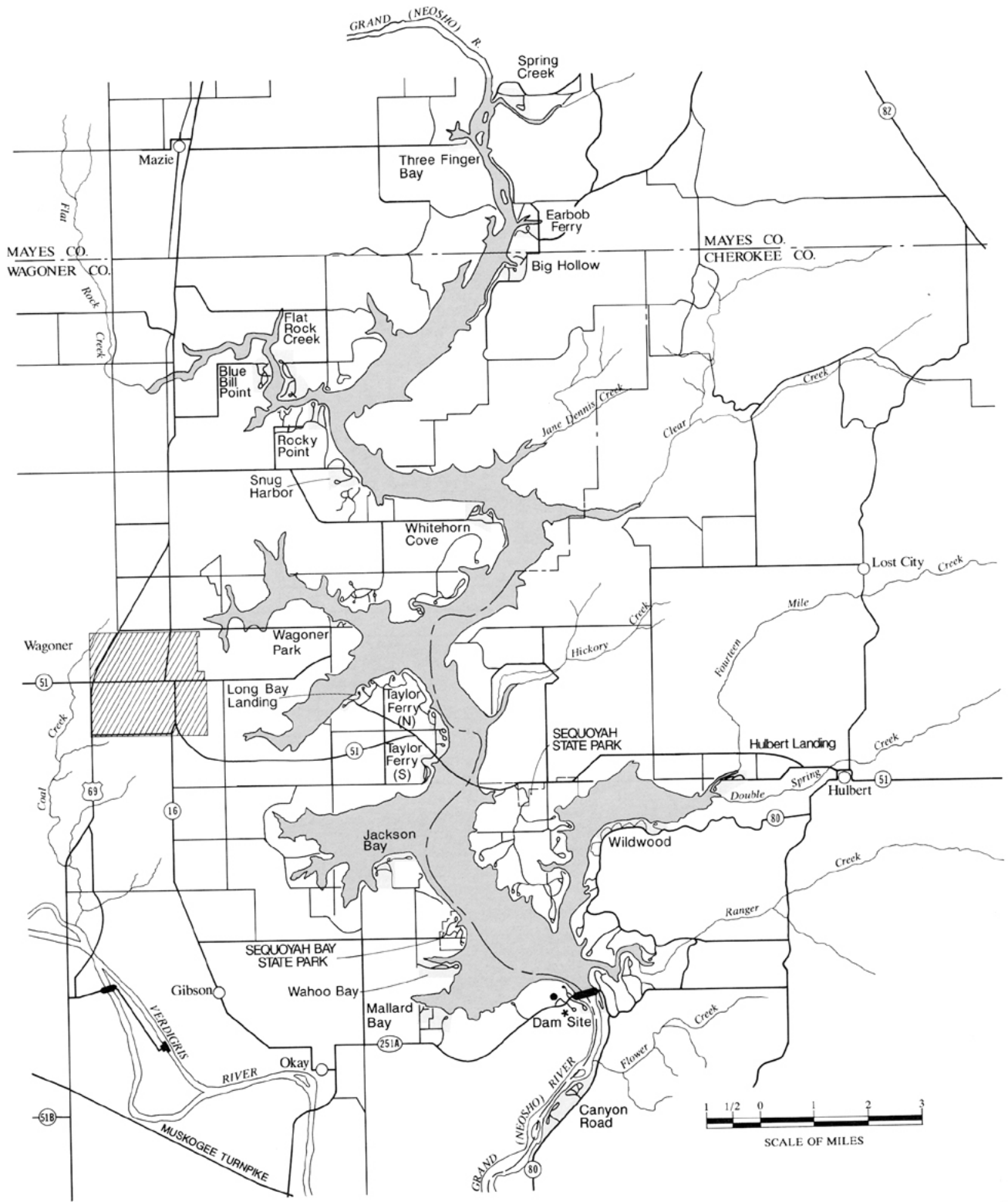
LAKE DATA—

	Elevation (NGVD)	Area (Acres)	Capacity (Acre-Feet)
Flood pool	582.0	51,000	1,284,400
Normal pool	554.0	19,900	365,200



RECREATIONAL AREAS	FACILITIES																			
	Boat Ramp	Picnic Area	Designated Campsites	Drinking Water	Group Shelter	Restrooms	Showers	Swimming Beach	Change House	Trailer Dump Station	Electric Outlets	Concession Services	Playground	Nature Trail	Marina	Golf Course	Cabins	Enclosed Fishing Dock	Boat Rentals	Swimming Pool
Canyon Road	●	●	●	●		●	●			●	●									
Mallard Bay	●	●	●			●														
Wahoo Bay	●	●	●	●		●		●												
Sequoyah Bay State Park ¹	●	●	●	●	●	●	●	●		●	●	●			●			●		
Jackson Bay	●	●	●	●	●	●					●									
Taylor Ferry (S)	●	●	●	●	●	●	●	●		●	●			●						
Taylor Ferry (N)	●	●	●	●	●	●				●		●								
Wildwood	●	●	●	●	●	●				●										
Hulbert Landing		●	●	●		●														
Sequoyah State Park ²	●	●	●	●	●	●	●	●		●	●	●		●		●	●			●
Long Bay Landing	●											●								
Wagoner Park	●	●																		
Whitehorn Cove	●	●	●	●	●	●		●				●								
Snug Harbor	●																			
Rocky Point	●	●	●	●	●	●	●	●		●	●									
Blue Bill Point	●	●	●	●	●	●	●			●										
Flat Rock Creek	●	●	●	●	●	●	●			●		●								
Big Hollow	●	●	●	●	●	●														
Earbob Ferry	●																			
Three Finger Bay	●																			
Spring Creek	●	●	●	●		●						●								
Overlook														●						
Dam Site	●	●	●	●		●	●			●		●								

ADDITIONAL FACILITIES: ¹Tennis courts; ²Lodge, tennis courts, stables and airstrip



LEGEND

	U.S. Highway		Interstate Highway
	State Highway		Paved Road
	Secondary or Public Use Area Road		Overlook
	Project Office		Recreation Area
	State or National Park Boundary		City with population less than 1000
	City with population greater than 1000		

