



Oxley Nature Center Newsletter

Volume 154

November/December, 2004

Robert G. "Bob" Jennings died at his home September 15, 2004, with his wife Kathryn Lynn "Kelly" Jennings by his side. Bob became the first director of Oxley Nature Center on September 15, 1977. He retired as director in 2002, after 25 years service.

The following testimonial to Bob was written by Dick Sherry.

The last few weeks have brought a lot of remembering and reflecting on the impact of Bob Jennings's life. We first met in 1977 when Bob came to interview for the Naturalist's position at the fledgling Oxley Nature Center. We liked him from the start, and were pleased when he accepted the job. As the president of the non-profit organization that had raised funds for the Nature Center, I got to work closely with Bob during those amazing early years when the trail system was installed, the boardwalk and Coal Creek bridge were built, and the shelter and Interpretive Building were designed and constructed. Bob's input and supervision were critical to all those projects.

As I think of all the things he did, it is hard to say what was the most significant. But perhaps it is the fact that the education programs he put in place have touched the lives of over a generation of Tulsa area students. Those 4th graders that came out in 1978 are now in their mid-thirties, and some would have children who have also participated in the school programs at Oxley. We can only imagine how far the ripples of his influence have gone. Just as Bob mentioned in his essay "Goose Music", the song of the geese stayed with him long after they were out of sight, so will the wit, wisdom and music he brought to all of our lives.

The following excerpt from "Goose Music" can be read in its entirety in Bob Jennings's book, "From the Stump, Thoughts of a Naturalist". (available at The Nature Store).

Then, high above, out of sight beyond the canopy of the forest, I hear the song.
Geese.

Shifting chevrons dark against the October blue of the sky, singing to the passing world the praise I cannot put into words. They fly south, to spend the winter months on sandy shores, where snow cannot find them. As they pass, they sing an ancient song of larger forests and bluer lakes, of prairies unscarred by roads, and a sky that was theirs alone.

Below, anchored to the ground with chains I cannot break. I sing along. Here's the stump, so sit, fumble for a match to fire the pipe, and listen to the song fade.



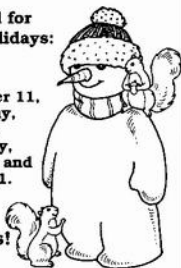
The geese pass swiftly, but the song does not. I sit in the growing dusk and remember the gift sent down. I cannot fly and I cannot match their song, but I can, for a moment, find their freedom within myself. It is enough.

Nature Center Happenings

We will be closed for the following holidays:

Thursday, November 11,
Thursday and Friday,
November 25 & 26,
Friday and Saturday,
December 24 & 25, and
Saturday, January 1.

Happy Holidays!



OXLEY AND REDBUD HOURS:

The gates at Oxley Nature Center are open daily, with the exception of most City holidays, from 8:00 a.m. - 5:00 p.m. At Oxley, you may park outside the gates from 7:00 a.m. - 9:00 p.m. to walk the trails even when the gates are closed.

At Redbud Valley Nature Preserve, the gates are open Wednesdays through Sundays, from 8:00 a.m. - 5:00 p.m. You may **not** hop the fence when the Nature Preserve is closed: on Mondays or Tuesdays, on City holidays, before 8:00 a.m., or after 5:00 p.m.

PROGRAM INFORMATION:

Call: 669-6644 to register or for more information about programs. Children under 12 must be accompanied by an adult, unless otherwise stated. Programs that are wheelchair accessible are designated with the ♿ symbol. Programs with insufficient registration may be cancelled 48 hours prior to program.

Visit our website at "<http://www.oxleynaturecenter.org>".



Kid's Saturday Programs

\$5 for general public, \$3 for members, all ♿



Discovery Club (Ages 3-5 years)

Each child accompanied by an adult, please

November 20, 10:00-11:30 "Autumn Leaf Hunt"
We will watercolor a leaf in our own fall colors.
Sign-up begins Sunday, November 7.

December 18, 10:00-11:30 "Feathered Friends"
Let's find out what's so special about birds.
Sign-up begins Sunday, December 5.

Adventure Club (Grades K-2nd)

Kid's only, please

November 20, 10:00-11:30 "Caramelita Hunt & More Nature Games"
Come search for the Caramelita critter!
Sign-up begins Sunday, November 7.

December 18, 10:00-11:30 "Nature's Collage"
We'll make a collage with natural materials we've gathered. Sign-up begins Sunday, December 5.



Astronomy Programs

\$2 for general public, free to members, all ♿, open to all ages



Tuesday, November 9, 5:45-6:45 a.m. "Planets Before Sunrise" We'll look at Saturn, Jupiter, Venus, a thin "old" moon and maybe even Mars. Bring binoculars to the east side of Lake Yahola. Moonrise is 3:19 a.m. and sunrise is 6:58 a.m. Sign-up begins Sunday, October 31.

Sunday, December 12, 7:30-8:30 p.m. "Geminid Meteor Watch" We'll look at star patterns as we watch for "shooting stars". Dress warmly, bring a thermos of coffee or hot chocolate, and bring something to sit on. Meet at the east side of Lake Yahola. Sunset is 5:11 p.m. and moonset is 5:33 p.m. Sign-up begins November 28.

Full Moon Walks

\$2 for general public, free to members, all ♿, all ages, meet at Oxley, registration required

Friday, November 26, 6:00-7:30 p.m. "Beaver Moon"
Beavers are busy making repairs to the lodge, and cutting and storing food for the winter months ahead. We may find them at work tonight.

Monday, December 27, 6:00-7:30 p.m. "Cold Moon"
Short days don't allow much warming, so nights can be really cold. That doesn't keep **all** critters denned up. Come along for the last full moon of 2004.

Programs and Special Events

November

- 6 "Saturday Morning Birding" Ages: All ■
 Saturday 8:00-9:45 a.m.
 Free registration not required



Meet in the Oxley parking lot at 8:00 a.m.
 Bring binoculars if you have them.

- 7 "Statehood Stroll" Ages: All ■
 Sunday 2:00-3:30 p.m.
 \$3 for general public \$1 for members

Oklahoma became a state November 16, 1907. Bring your stroller or wagon and a snack. We'll stroll the trails and look for Oklahoma's natural symbols, and then make a collage to take home. Meet at Oxley. Sign-up begins October 24.

- 13 "Hike and Draw" Ages: 12 & up
 Saturday 10:00-12:00 noon
 \$2 for general public free for members

Put on your hiking shoes for this one! Bring a sketchbook and a pencil with an eraser as we explore the trails and sketch what we see. Meet at Redbud Valley. Sign-up begins October 31.

- 21 "Aromatherapy for Beginners" Ages: 14 & up ■
 Sunday 1:00-3:30 p.m.
 \$15 for general public \$12 for members

How important is the sense of smell? Join us to learn how aromatic plants are used to enhance well-being. Research has proven the health-giving qualities of different plant essences. We will sample some products and make some of our own to take home. Meet at Redbud Valley. Sign-up begins November 7.

- 27 "North Woods Ramble" Ages: All
 Saturday 1:30-3:30 p.m.
 \$2 for general public free for members

Put on your hiking boots and be ready to walk a little over 2 miles. Fresh air, big trees, bird calls, and always the chance for something unexpected! Meet at the northwest corner of Mohawk Golf Course. Sign-up begins November 14.

Birding--Saturday, January 1st, 2005

Start your new year with nature! Join us for a bird walk from 8:00 to 9:45 on the morning of New Year's Day. All skill and age levels are welcome and registration is not required. Oxley Nature Center will be closed, so meet outside the Oxley gate. Bring binoculars and dress warmly!

December

- 4 "Saturday Morning Birding" Ages: All ■
 Saturday 8:00-9:45 a.m.
 Free registration not required



Meet in the Oxley parking lot at 8:00 a.m.
 Bring binoculars if you have them.

- 11 "Winter Walk" Ages: All
 Saturday 10:00-12:00 noon
 \$2 for general public free for members

See how winter changes the landscape. Identify trees without their leaves. Look at different seeds and fruit on the prairie and in the woods. Meet at Redbud. Sign-up begins November 28.

- 19 "Skulls and Bones" Ages: All ■
 Sunday 1:30-2:30 p.m.
 \$2 for general public free for members



Learn to age deer skulls by studying their teeth. Determine if skulls belonged to an herbivore, carnivore, or omnivore. Identify basic parts of skulls and bones. Meet at Oxley. Sign-up begins December 5.

Oxley Art Classes With Brenda Knapp

Making Black Walnut Ink Workshop

November 20, 9:00-12:00 noon
 Age: Adults (14 +)
 Tuition: \$15 for members, \$18 for non-members

The Old Masters knew the secret of this rich, warm-colored ink. Black walnut-ink color ranges from coffee brown to a deep chocolate brown. Students will learn how to make their own ink from walnuts, and will do a drawing using ink washes. Bring a sealable plastic jar if you'd like to take some ink home. Other supplies are provided.

Kid's Butterfly Books Workshop

November 20, 1:00-3:00 p.m.
 Ages: 10-14
 Tuition: \$8 for members, \$12 for non-members

This class will teach the students how to make their own butterfly-shaped books and how to illustrate them with pictures of butterflies. All supplies are included.

**Advance registration required.
 Class fee must accompany registration.**

Learn How To Play The Cedar Flute

Date: Tuesday, November 23

Time: 2:00-4:00 p.m. or 6:00-8:00 p.m.

Location: Oxley Nature Center

Instructor: Janalea Hoffman, M.A.,
Music Therapist

Ages: 8 through adult (children must be accompanied by a paying adult).

Fee: \$30.00 for non-members,
\$25.00 for members



Preregistration is required. Fee must accompany registration

In this experiential class, you will learn the basic techniques needed to play a Native American cedar flute. This instrument is one of the easiest to learn and is a wonderful meditative tool. You do not need any previous musical training to attend this class.

A five hole flute in the key of "A" will be provided for your use during class. This flute is easy to play and has a powerful voice. The cedar wood gives it a wonderful organic sound. It is great for playing indoors or outdoors and was used by Native Americans to imitate nature sounds.

If you wish to purchase a flute they will be available for sale with a price range of \$59-\$329. Credit cards will be accepted for flute purchases.